



*A Place to Thrive*

# FAMILIES FIRST FOR CHILDREN PATHFINDER

*DHEERAJ CHIBBER  
CHILDREN, FAMILIES AND EDUCATION*

# Vision and Priorities

**Luton 2020 - 2040**  
**A place to thrive**

Children and young people at the heart of everything we do

## Our town-wide Vision for Luton 2040:

Luton will be a healthy, fair and sustainable town, where everyone can thrive and no-one has to live in poverty.

## Our priorities for Luton 2040:

Building an inclusive economy that delivers investment to support the growth of businesses, jobs and incomes.



Improving population wellbeing and tackling health inequalities to enable everyone to have a good quality of life and reach their full potential.



Becoming a child friendly town, where our children grow up happy, healthy and secure, with a voice that matters and the opportunities they need to thrive.

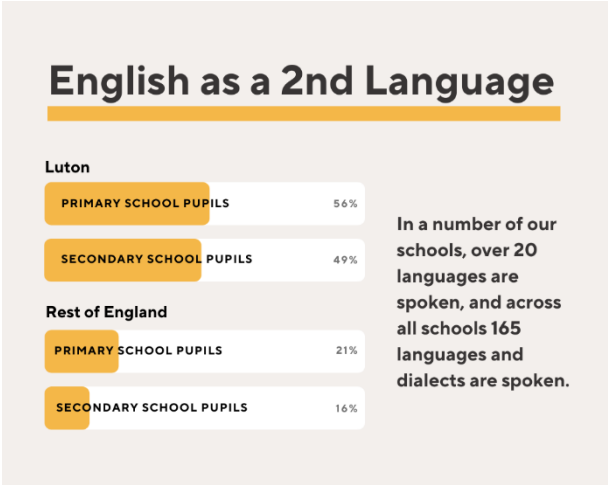
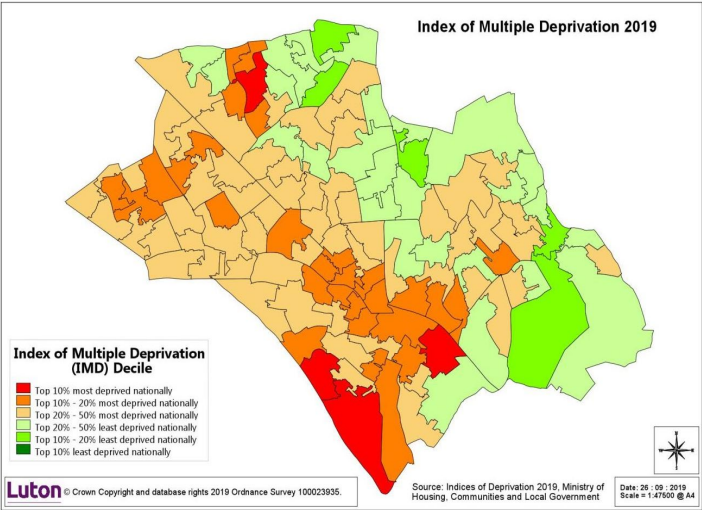
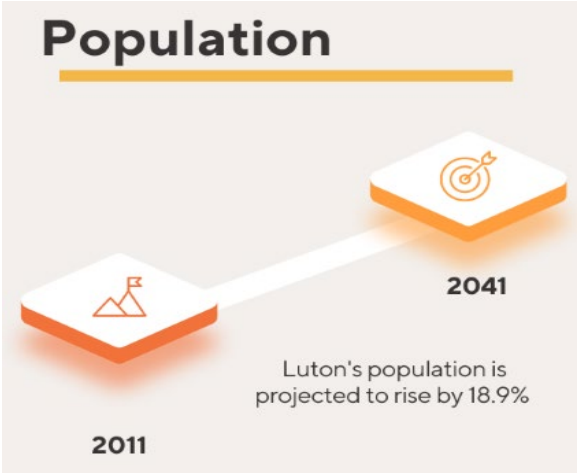


Tackling the climate emergency and becoming a net zero town with sustainable growth and a healthier environment.



Supporting a strong and empowered community, built on fairness, local pride and a powerful voice for all our residents.







# The Luton Context

- Poverty
- Demands – housing, social care
- Our social care journey
- A complex partnership landscape
- Education
- Innovation
- Performance

# Luton's wave 2 perspective

- Clarity of design principles – a mixed bag
- Timelines and assumptions
- Funding
- Discussions with DfE and Coach
- Evaluation and partners
- Recruitment and retention
- Ofsted visits and statutory duties

# Sustainability

- Restructure – maintaining a safe system whilst implementing fundamental change to service delivery
- Bringing our teams and system partners on the journey
- Realignment of funding across the partnership – highly dependent on the evaluation
- Needs further investment

*“this scale of reform programme needs £2.6bn over the period and a billion over the first year”* (MacAlister March:2023)

# Impact

## DfE measurable benefits

- Reduction in the number of children looked after
- Reduction in the number of child protection plans
- Reduction in the number of days a child spends in care

## Programme opportunities for Luton

- Transforming the way we work
- A more joined up system
- Strengthening our workforce
- Further strengthening of partnerships
- Children and families

# PATHFINDING – DISCOVERY TO IMPLEMENTATION

April to May

Revise structure (FH Multi-disciplinary team and Multi-agency CP team)

Confirm governance

Develop and submit costed delivery Plan

Engagement sessions set up (internal and external)

DfE Policy sessions completed

Develop all programme documentation

Complete programme team recruitment

Complete a service wide gap analysis

PVI and Family Hubs engaged

New roles defined and JDs created (FHLP, LCPP)

Update policy and procedures (Effective Support and Practice framework)

Training and engagement workshops (internal and external)

June to July

Recruitment completed

Evaluation criteria confirmed and process in place

HR and finance processes completed

DfE review and approve costed delivery plan

Confirm design and delivery methodology

Feedback processes in place (internal and external)

Revise information sharing protocols

New processes including FNM tested and in place

Revised documentation completed

Revised parental support offer in place

July to March

Go live

Evaluation underway

New teams Family Help and Multi-agency Child Protection in place

FH TAF process shared and understood across the system

Family group decision making embedded

Family network support package procedure in place and understood

Regular highlight reporting to board